

MC 250.09FL

REAR GROUP WITH TWO INDEPENDENT ROTATION GROUPS
FRONT WHEELS DRIVE WITH COUNTERROTATION
MAST FREE LIFT
REMOVABLE COUNTERWEIGHTS
REMOVABLE GROUP



Optionals:

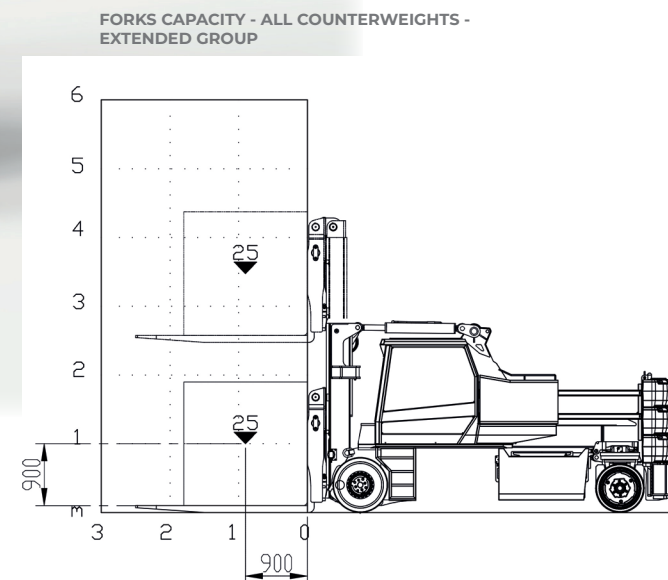
- HYDRAULIC CRANE BOOM WITH ELECTRONIC SAFE LOAD INDICATOR AND TILTING MOMENT LIMITER
- NON MARKING TIRES
- RADIO REMOTE CONTROL
- ATEX CONVERSIONS
- CUSTOMIZED PAINTING

Technical features

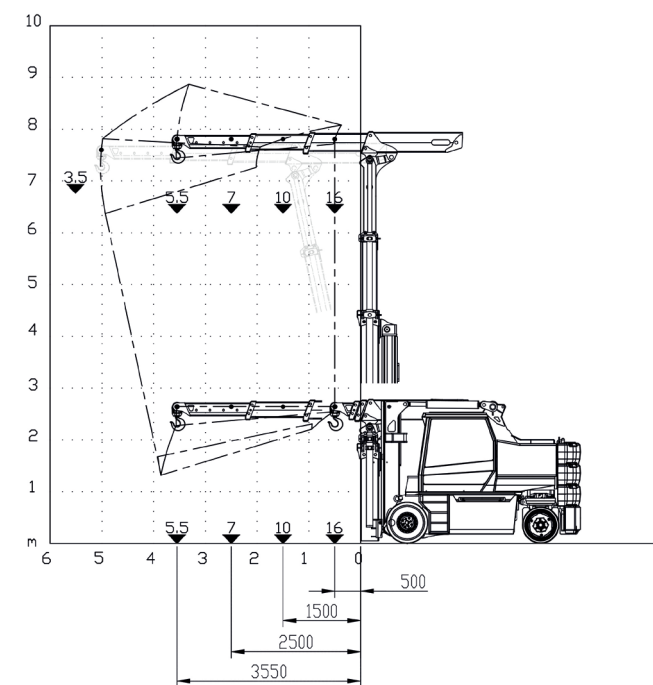
Forks with extended group	25t@0.9m
Forks with retracted group	16.5t@0.9m
Dimensions	4120x1800x2750 mm

Front-wheels drive. N°2 electric motors AC 12 kW 96V	Hydraulically foot controlled service brake on all wheels, hydraulically automatic or button controlled parking brake on front wheels
Total with forks Kg. 25.000 Total with crane boom Kg. 27.500 Weight support and fork lenght Kg. 3.000 Crane boom weight Kg. 3.000 Removable ballasts weight Kg. 6.000	Fabricated from preformed and welded quality steel plate
96 V - 1050 Ah	Mast angle inclination +12°/-7°
Front 800x674 in polyurethane cushion rear wheels: nr 4 in cushion 28x10x22	N° 1 electric motor AC 35kW 96V
Steering -90°/+90°	

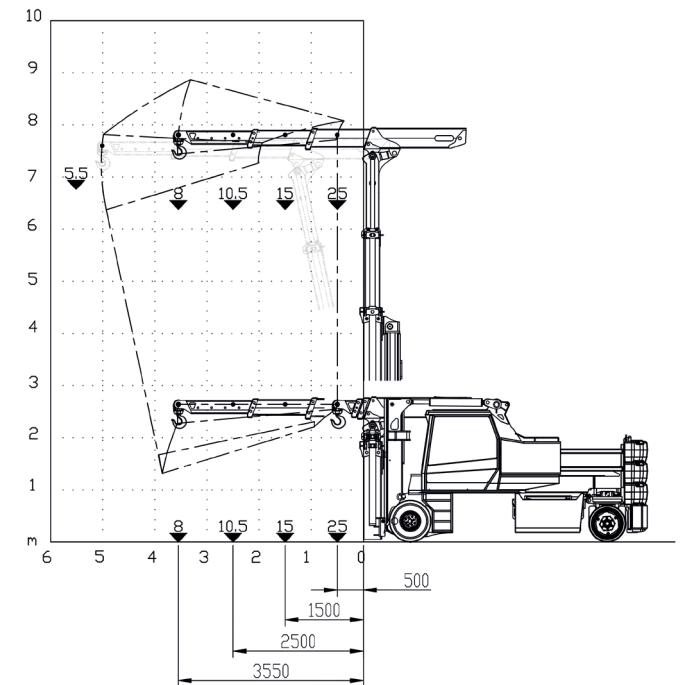
Load charts



BOOM CAPACITY ON THE MAST - ALL COUNTERWEIGHTS - RETRACTED GROUP



BOOM CAPACITY ON THE MAST - ALL COUNTERWEIGHTS - RETRACTED GROUP



EU Standards CE

	EN 13000:2014 WITH HYDRAULIC BOOM
	EN 22915:2022 EN 3691:2015 and subsequent modifications



Dimensions

